

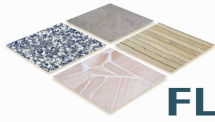


# Product Information Sheet



Sheet Number: **0048**

Rev 17-05-2010



## FLOORSHIELD

## Water Based Concrete Coloured Coating

### FLOORSHIELD

is a based on a water based urethane resin. Floorshield can be applied to concrete, timber decking, stamped or stenciled concrete. The best features of this coating are that it is water based unlike conventional messy 2 Pac epoxy systems and that Floorshield is very hard wearing.

#### General Application Guide:

##### Concrete, Stamped Concrete or Ceramic Tiles -

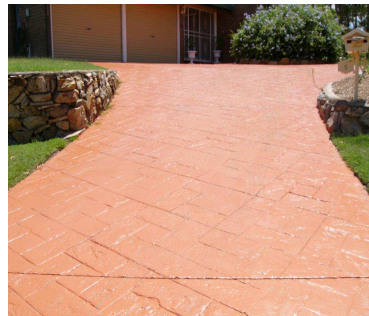
1. Use a 5:1 mix of Mouldshield C with water and scrub floor with suitable broom to remove dirt, oil and grease stains.
2. Hose or water blast the surface clean.
3. When dry completely, repair cracks or holes in concrete using Slab Repair . Apply Slab Repair with a spatula into prepared cracks. (see notes below) Feather compound out so crack repair is smooth.
4. Apply one coat of Primer Plus Primer approximate dry time, 2 hours
5. Apply 1 coat of coloured Floorshield using a long nap roller.
6. A second coat can be applied following day



#### Notes:

- Do not drive vehicles or place furniture or heavy objects on new surface for a period of 3 or more days.
- Provide good ventilation so the surface can properly cure.
- When surface is in use, oil or other chemical spills should be wiped up immediately and wash with water.
- Cracks can be repaired by grinding out the surface crack to a depth of approx. 5mm using an angle grinder and concrete cutting disc.

**Notes:** There are many substrates on the market. Please consult Shieldcoat for further information regarding applications not on this sheet.



#### Specifications:

(all dry times are considered at 25° C and at 50% humidity)

**Surface Dry:** 4 -5 hours

**Top Coat:** 24 hours

**Hard Dry:** 4 -5 days

**Coverage: 120-150 M<sup>2</sup> per 15lt pail per coat.**

**Thinning:** No thinning required normally. If desired thin with water sparingly.

**Clean Up:** Clean up with water



Top Picture: Floorshield Stamped Concrete

Bottom Picture: Floorshield over unsealed ceramic tiles.

Right Picture: Available 15lt pails

See MSDS for safety information



**ISO 14001**  
REGISTERED FIRM

Shieldcoat has become one of the first paint manufacturer in Australia to meet the international environmental standard, **ISO 14001**

#### Benefits:

Attractive Finish



Hard Wearing



Allows for some substrate movement



Easy to Apply



Various Colours



Stands vehicle or shoe traffic



Environmentally friendly

